

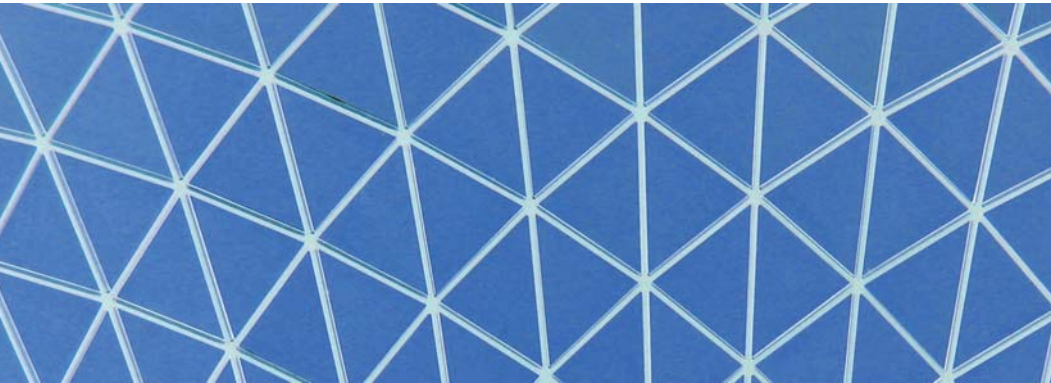


IBRA International Bone
Research Association



SCIENTIFIC NETWORKING

IBRA - a unique international network in research and continuous education



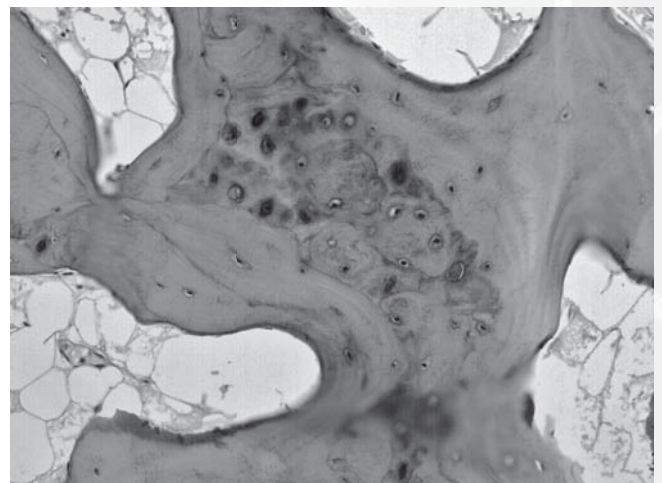
IBRA (the **I**nternational **B**one **R**esearch **A**ssociation) is a financially independent, internationally oriented non-profit organization for specialized clinicians and research scientists. IBRA's core activity is the future-oriented advancement of bone-tissue research and management focusing particularly on

- Maxillofacial and orthopaedic rehabilitation
- Surgical procedures and clinical management
- Materials research including hardware development
- Biomechanics
- Osteointegration, bone generation, soft-tissue reaction and bone biology
- Tissue engineering

IBRA membership is open to all clinicians and research scientists in the field of bone and tissue management.

Ideas and know-how from science and industry in the fields of research, development and education are put at the center of our consideration. Best international network and worldwide cooperation within an environment that does not follow financial gain, provide an excellent base of expertise for groundbreaking innovation.

Guided by an international interdisciplinary group of best-experienced surgeons and scientists, IBRA's education program offers clinicians special courses on the application of specific methods as well as medical trainings in partner centers around the world. Continuous education is complemented by financial support for research projects mainly emphasizing on applied research and clinical studies and on a smaller scale on basic research as well.



HISTORY

Established in Zürich, Switzerland, on 25 September 2004, IBRA was conducted to be a scientific and internationally oriented organization encouraging development of innovative solutions in a friendly, loyal atmosphere.

Devoted to the exchange of professional knowledge, the promotion of new scientific developments, the engineering of the musculoskeletal system and of the creation of adequate scientific frame for coordinated multicenter research and highly specialized further trainings, eighteen forward-looking clinicians took the initiative in founding the International Bone Research Association.

These principles are still the primary aims and purposes of IBRA, which are followed in all activities for the ultimate benefit of patients throughout the world.

PHILOSOPHY

As a future-oriented organization, IBRA provides first-rate assistance to the younger generation of clinicians and academics, offering adequate programs of education and research support.

Open-mindedness and international acceptance form the basis for advanced assistance in realizing modern research projects and promoting individual careers.

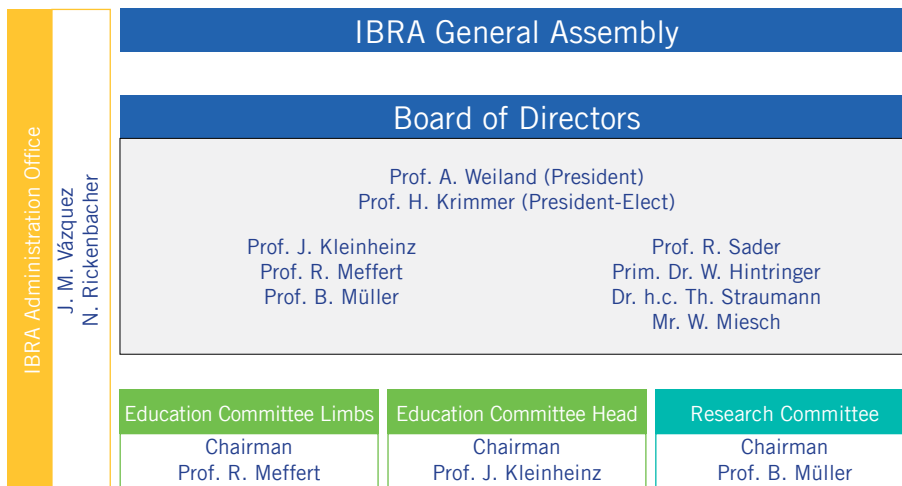
IBRA maintains close contacts with respected scientific societies and journals around the world. As an international forum reaching across geographic and cultural borders, IBRA offers an up-to-date network for the exchange of experience and knowledge in applied bone and tissue research.

Organisational Structure

As a straightforward one-class society, IBRA offers an attractively structured package of services and benefits based on the scientific competences and international connections of his members. Following current concepts in treatment management and ensuring the correct interpretation of newest technologies, IBRA supports the dissemination of knowledge into the medical and scientific community.

A transparent communication culture, global cooperation and the interaction with IBRA Training Centers support the improvement of our scientific network, medical training opportunities and educational activities.

IBRA, as a knowledge-driven institution, intends not only to support the state-of-the art principles of Internal Fixation, but also to encourage the advancement in the Bone Research, clinical investigation and education. Particularly important is the progress in Surgery of Head and Limbs, resulting in development of innovative solutions, realizing modern research projects and with special emphasis, promoting individual careers.





**Prof. Dr. med.
Andrew J Weiland**
President
Hospital for Special Surgery
New York, USA



**Prof. Dr. med.
Hermann Krimmer**
*President-Elect
Founding Member*
St. Elisabeth Hospital Handcenter
Ravensburg, Germany



**Prof. Dr. Dr.
Johannes Kleinheinz**
*Chairman Education
Committee Head*
University Hospital Münster
Dept. for Cranio Maxillofacial Surgery
Münster, Germany



**Prof. Dr. med
Rainer H. Meffert**
*Chairman Education
Committee Limbs*
University Hospital Würzburg
Surgery Department Würzburg,
Germany



**Prof. Dr.
Bert Müller**
*Chairman Research
Committee*
University of Basel
Biomaterials Science Center
Basel, Switzerland



**Prof. Dr. Dr.
Robert Sader**
University Hospital Frankfurt a.M.
Dept. of Cranio-Maxillofacial Surgery
Frankfurt am Main, Germany



**Prim. Dr. med
Wolfgang Hintringer**
Landeskrankenhaus Weinviertel
Korneuburg
Vienna, Austria



**Dr. h.c.
Thomas Straumann**
*Representative Medartis
Founding Member*
CenterVision AG
Basel, Switzerland



Mr. Willi Miesch
Representative Medartis
Medartis AG
Basel, Switzerland

»Best medical and scientific contributors and contacts, a strong industrial partner and continuous education in related disciplines«



Education Committees

The aim of the IBRA Education Committees is to provide an international platform reaching across geographic and cultural borders, to exchange expertise and up-to-date knowledge, with emphasis on promotion of individual academic and professional careers. The Education Committees are responsible for the planning, financing and realization of all of the organization's educational activities. The Committees meet four times a year to develop strategies for supporting academic fellowships and clinical trainings through its various scholarship programs and to organize scientific and clinical courses in bone research and related clinical fields. The members of the Committees make every effort to identify existing needs for education in this field and also to evaluate the content and quality of each educational project.

IBRA's Education program provides a platform for scientific exchange between its members. The main goal of the IBRA Scholarship Program is to promote individual career development by providing financial support for clinical training and for research in various training centers. IBRA Training Centers have been selectively chosen for their ability to provide a broad clinical experience in the treatment of patients whilst promoting exemplary research.

The Education Committee Head consists of the following members:

Johannes Kleinheinz, Münster, Germany (Chairman)

Wock Hallermann, Bern, Switzerland

Klaus Breuer, Basel, Switzerland

The Education Committee Limbs consists of the following members:

Rainer Meffert, Würzburg, Germany (Chairman)

Jörg Grünert, St. Gallen, Switzerland

Christoph Pezzei, Wien, Austria

Klaus Breuer, Basel, Switzerland

Courses and Workshops

Current clinical priorities and newest improvements in the field of activities are determining our strategies and planning in the area of education. Intensive expertise and didactic skills are the most important attributes of our international Faculties.

Furthermore, the courses are very popular thanks to the numerous case presentations as well as to the vivid discussions, both in the auditorium and besides the official program.

IBRA's course programs emphasize on basics in clinical diagnostics, treatment and follow-up, focusing on bone surgery in the segment of Head and Limbs. Providing useful theoretical and practical information on bone surgery, clinicians can improve their skills or can be introduced to specific treatment methods.

The courses are open to all working in the field of bone science, as expressed in the objectives of IBRA. There are no specific requirements for participation, although it is advisable that the participant should have an MD or DMD diploma or equivalent.

Global IBRA Educational Network



IBRA Training Centers

A dense global grid of over 20 Training Centers with specific expertise in the areas of bone research and the different specialties in surgery of Head and Upper Limbs provides an interesting range of options for applicants.

Candidates are therefore responsible to clearly define the scholarship goals and discuss specific wishes directly with the fellowship director of the designated Training Center as these are basic elements of a scholarship.



»Develop and support the creation and dissemination of scientific knowledge in the bone biology and internal fixation sectors«



Research Committee

The IBRA Research Committee's main concern is to evaluate research projects dealing with biology and the improvement or development of internal fixation devices for maxillofacial and upper limb surgery. The Committee also decides on the amount of financial support that can be granted to the project.

Since the IBRA is a young Foundation and has limited funds available, it will at present consider for support only small grant proposals dealing exclusively with the improvement and development of medical devices for internal fixation in the aforementioned clinical areas. Customized funding is available for fundamental research. Funding by the IBRA is open to everyone, not just to members. Grants can also be used as complementary financing to a running project. Submitted project proposals are evaluated by the Research Committee twice a year.

The Research Committee consists of the following members:

Bert Müller, Basel, Switzerland (Chairman)

Frank Kloss, Innsbruck, Austria

Frank Witte, Hannover, Germany

Adrian Spiegel, Basel, Switzerland

Robert Schenk Prize for Basic Research on Bone
Robert Schenk Prize for Applied & Clinical Research

The Robert Schenk Research Prizes are awarded annually and are presented in honor of Prof. Robert Schenk, who pioneered the biology of internal fixation and implant healing, and whose life's work has contributed greatly to the techniques now used clinically in these disciplines. Both awards are endowed with prize money of CHF 15'000 in the categories:

- Research Advancement in Bone Biology (Fundamental Research)
- Research Advancement in Internal Fixation of Head & Neck or Limbs

The winner will be announced to the media and the prize will be awarded at the annual IBRA General Assembly. The winners are expected to present his/her scientific findings at this IBRA Scientific Seminar.



Prof. Robert Schenk

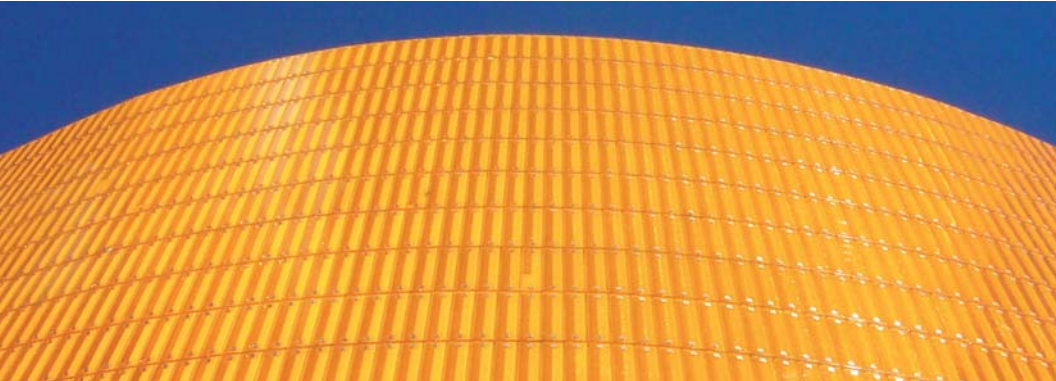
During the second half of the twentieth century, Professor Robert Schenk gained a worldwide reputation in the fields of bone biology, fracture healing and implant osseointegration. He conducted pioneering work together

with the late Hans Willenegger relating to the bone-healing mechanisms underlying the then emerging and revolutionary technique of internal fixation. His publications dealing with these mechanisms are of everlasting value in medical sciences and beyond.

Professor Schenk also contributed to our knowledge of enchondral ossification within the growth plate, and, together with Herbert Fleisch, analyzed the effects of bisphosphonate drugs on this organ at a time when these agents were being developed to treat osteoporosis.

Professor Schenk's appreciation of aesthetics and modern art is reflected in his high-quality and beautiful histological images. It is no coincidence that he published a book in which modern art was compared with the microcosmic world. This unique and outstanding unification of serious and solid science with aesthetics and art was Professor Schenk's trademark. But also his didactic talent was greatly esteemed by students, surgeons and scientists around the globe.

IBRA Research & Educational Support



Research Support

The goal of this program is to provide young clinicians and scientists with financial support for specific research projects in their chosen field.

The candidate should have an MD or a DMD diploma or equivalent. There is no age limit for candidates.

Research Grant Program

Small Grant Application (SGA):

These grants are primarily intended for those research proposals submitted by young clinicians who are doing initial clinical research (preliminary studies).

The grants should not exceed the sum of CHF 50'000. Annual reports, either intermediate or final, must be provided. The goal of the project is directed towards a publication in an international peer-reviewed journal. Clear hypothesis testing is a prerequisite.

In the future, the following types of Grants and Stipends will be established:

Research Proposal for Clinical or Laboratory Research (RCL):

These grants will be awarded to researchers or research groups with an established reputation for credibility and thoroughness in the field, as demonstrated by a continuous publication record in peer-reviewed journals. The grant amount may exceed CHF 100'000, but should not be higher than CHF 200'000.

Research Program Projects (RPP):

These grant proposals may contain several single research projects (RCL's) or several single aspects within a major line of research, and are usually granted for several (3 - 5) years. RPP's are awarded only to well-established research teams of international repute. A single annual sum of CHF 200'000 should not be exceeded.

Educational Support

The target group for this scholarship program is primarily, but not exclusively, young colleagues. However, there is no specific age limit. It is important that the candidate has clear expectations as to how this desired scholarship will benefit his/her professional career.

Scholarship Program

Program A - Partial financing of participation in international congresses:

This support should cover a part of travel expenses, registration and accommodation fees. Scholarship amounts range from CHF 1'500 to 2'000, depending on congress specifics (location, travel distance). This program is strictly limited to junior hospital doctors such as residents in training and PhD students. Strong preference will be given to candidates giving an oral presentation at the congress.

Program B - Clinical residential visit to a foreign host institution:

The duration of the clinical residential stay at a foreign host institution is intended for a period of one week up to four weeks. The financial support comprises a stipend of max. CHF 5'000 depending on the duration of the scholarship; (CHF 4'000 for the scholar and CHF 1'000 for the respective Training Center).

This program is suitable for clinical training such as learning a new surgical technique including pre- and postoperative management. The sum should cover the majority of living expenses and the expenditures of the Training Center as well.

Program C - Clinical and scientific residential stay at a foreign host institution:

This scholarship is intended to provide financial support for a clinical and scientific residential stay at a foreign host institution for a period of one month up to 3 months.

The stipends awarded is max. CHF 12'000; (CHF 10'000 for the scholar and CHF 2'000 for the respective Training Center).

This program containing both clinical training and active participation in a research project or literature review with possible publication, is designed for promoting an academic career. The sum should cover the majority of the living expenses and the expenditures of the Training Center as well.

Additional financial support for applications with a longer residential stay is possible in exceptional cases and will be evaluated by the IBRA Education Committee.

Membership



IBRA Membership entitles you to a variety of benefits

Current Benefits

- Simplified access to IBRA Research Grants
- Prioritized Member Scholarship application
- Considerably reduced course fees for members
- Favorite Member rates for all IBRA workshops
- Free participation to IBRA Scientific Seminars
- Continuous Information and Education
- Worldwide Networking
(Members and Training Centers)
- Access to the IBRA Member Area

Who is eligible for IBRA Membership?

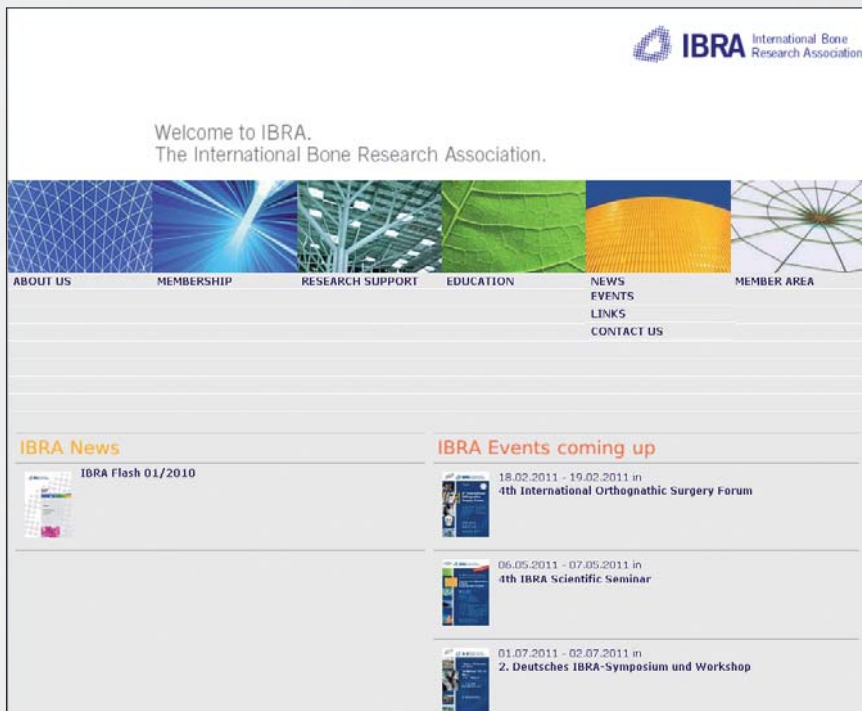
Any person with relevant qualifications and with interest in participating in all aspects of the IBRA Community can be admitted as Member of the IBRA.

Requirements for IBRA Membership

Membership is open to professionals with an expressed interest in any facet of bone and soft tissue surgery of the musculoskeletal system wishing to participate in the IBRA and abide by its principles and obligations.

A new IBRA Member has to be nominated by a current IBRA Member and supported by two current IBRA Members. All three are required to write letters of nomination or support and submit them to the IBRA Board of Directors who reviews all nominations at least once a year.

For detailed information please see www.ibra.ch



The screenshot shows the homepage of the International Bone Research Association (IBRA). At the top right is the IBRA logo and the text "International Bone Research Association". Below this is a welcome message: "Welcome to IBRA. The International Bone Research Association." A horizontal navigation bar contains six categories: ABOUT US, MEMBERSHIP, RESEARCH SUPPORT, EDUCATION, NEWS EVENTS LINKS CONTACT US, and MEMBER AREA. Below the navigation bar are two main content sections. The "IBRA News" section features a link to "IBRA Flash 01/2010" with a small thumbnail. The "IBRA Events coming up" section lists three upcoming events, each with a date range and a thumbnail: "18.02.2011 - 19.02.2011 in 4th International Orthognathic Surgery Forum", "06.05.2011 - 07.05.2011 in 4th IBRA Scientific Seminar", and "01.07.2011 - 02.07.2011 in 2. Deutsches IBRA-Symposium und Workshop".

IBRA International Bone Research Association

Welcome to IBRA.
The International Bone Research Association.

ABOUT US **MEMBERSHIP** **RESEARCH SUPPORT** **EDUCATION** **NEWS EVENTS LINKS CONTACT US** **MEMBER AREA**

IBRA News

IBRA Flash 01/2010

IBRA Events coming up

18.02.2011 - 19.02.2011 in
4th International Orthognathic Surgery Forum

06.05.2011 - 07.05.2011 in
4th IBRA Scientific Seminar

01.07.2011 - 02.07.2011 in
2. Deutsches IBRA-Symposium und Workshop



IBRA International Bone
Research Association

IBRA
International Bone Research Association

Hochbergerstrasse 60E
CH-4057 Basel
Phone +41 61 319 05 05
Fax +41 61 319 05 19
info@ibra.ch
www.ibra.ch